

Farm Retirement

LOCATION: 2259 114th Ave SE,
Rogers, ND 58479



Built on Trust.

AUCTION

OPENS: FRIDAY, JUNE 5

CLOSES: MONDAY, JUNE 15 | 10AM 2020

Timed Online

PREVIEW: Friday, June 5 - Monday, June 15 | **LOADOUT:** Monday, June 15 - Friday, June 19



TRACTOR

2008 Case-IH 385, 4WD, luxury cab, buddy seat, powershift, front & rear diff lock, 4 hyd., return flow, integrated auto steer, less display, receiver & Nav controller, electric mirrors, HID lights, (14) rear suitcase weights, Firestone 710/70R42 duals, 1,919 hrs., S/NZ8F109770



COMBINE

2007 John Deere 9760, STS, PRWD, Contour-Master, deluxe cab, deluxe controls, bullet rotor, variable spd. feeder house, TouchSet, 22-1/2' high cap. unloading auger, factory hopper ext., Y&M less display, Redekop MAV fine cut chopper, (2) sets concaves, Voyager rear camera system, Firestone 800/70R38 front tires, 480/70R38 rear tires, 875 sep. hrs., 1,408 engine hrs., S/NH09760S722150

HEADS, SWATHER & HEADER TRAILERS

2008 John Deere 635F flex head, 35', low dam, hyd. fore/aft, long & short poly snouts, CWS air bar, poly, AHH, single pt. hookups, S/NH00635F725832
1994 John Deere 925 flex head, 25', finger reel, contour shafts, multi pt. hookups, poly, long steel snouts, stubble lights, S/NH00925F656253
2010 John Deere 608C chopping corn head, 8x30", hyd. deck plates, knife rolls, AHH, single pt. hookups, S/N1H0608CCLA0735405
1979 John Deere 212 pickup head, 6-belt pickup, 00/10 Series hookups, S/N372324H
Case-IH 725 pull-type swather, 25', finger reel, auto fold, 540 PTO, no canvases, S/NCCC0001845
4-wheel header trailer, 35', 8-bolt hubs, extended pole
4-wheel header trailer, 25', 6-bolt hubs, extended pole

AIR SEEDER

2000 Flexi-Coil 5000 air seeder, 58', 9" space, 5-section fold, 4-1/2" carbide points, tower blockage monitor, walking tandems across, 2-bar harrow, Haukaas sidearm markers, w/2000 Flexi-Coil 2320 tow-behind cart, 2 compartment, single shoot, hyd. fan, hyd. 6" fill auger, (2) fine seed rollers, 16.5L-16.1 front tires, 23.1-25 tires, air seeder S/NU094907-00, cart S/NU089540-00

TILLAGE EQUIPMENT

2000 Riteway PRC4245 land roller, 45', 42"x1/2" drums, tandems on main, S/N2651-00
Flexi-Coil 820 cultivator, 54', 5-section fold, 4" knock-on sweeps, (70) shanks, single pt. depth, full floating hitch, walking tandems across, Flexi-Coil 3-bar harrow, S/NS071690
John Deere 1600 chisel plow, 41', 12" space, tandems across, hyd. NH3 nitrolator, NH3 points, rear hitch, Summers 3-bar harrow, S/N4280N
Gates Magnum HD harrow, 60', 5-bar sections, 24"x1/2" tines, auto fold
IHC 800 pull-type plow, 11x18" spring trip, hinged, dual carrier wheels, no coulters

SEMI TRACTOR & BOX TRUCKS

2000 Volvo VNM64T tandem axle day cab, ISM Cummins 370 hp., 10 spd., air susp., air slide 5th, diff lock, cruise, 168" WB, 295/75R22.5 tires on steel rims, shows 369,140 miles
1983 GMC Brigadier tri-axle, Cummins, Eaton 9 spd., spring susp., diff lock, Midland 18'x96"x66" box, hoist, roll tarp, combo end gate, spring ride pusher axle, 13/80R20 front tires on steel rims, 11R22.5 rear tires on steel rims, shows 301,284 miles
1978 IHC Loadstar 1600 tag axle, V8 gas, 5&2 spd., 16'x60" steel box, hoist, roll tarp, combo end gate, 9:00-20 tires, runs, no brakes, shows 92,539 miles
1969 GMC 5500 single axle, V6 gas, 4&2 spd., 15'x60" steel box, hoist, roll tarp, 9:00-20 tires, 126,888 miles, does not run, needs carburetor



HOPPER BOTTOM TRAILER

2008 Wilson DWH-500 tandem axle aluminum hopper bottom, 41'x96"x72", air susp., Shur-Co 4500HD electric roll tarp, air scale, wireless remote, 11R24.5 tires on 8-hole aluminum rims

UTILITY & IMPLEMENT TRAILERS

2004 PJ 518D tandem axle trailer, 18'x83", 2' beavertail, spring susp., wood deck, slide-in ramps, aluminum fenders, 205/75R15 tires on 5-hole rims
Spartan single axle steel utility trailer, 8'x72", wood deck, tilt bed, 5.70-8 tires
Donahue tandem axle implement trailer, 10'x28'

SPRAYERS & FERTILIZER APPLICATOR

2005 Case-IH SPX 3310 self-propelled sprayer, AimCommand, 90' boom, 20" spacing, 1,000 gal. SS tank, rinse tank, 6-section shut-off, Ag Leader Insight display, integrated auto steer, auto swath, hyd. tread adj., SS chemical inductor, 2" fill, foam markers, fenders, 320/90R46 tires, 2,069 hrs., S/NJFG0007407
Melroe 220 spracoupe, 60' boom, 20" spacing, VW liquid cooled gas motor, 4 spd., 200 gal. poly tank, foam markers, belt drive pump, electric boom & fold, front tow hitch, (2) sets rear tires, 1,140 hrs.
Valmar 1620 granular applicator, hyd. fan, 16-outlet, no ground drive assembly, S/N1620C170

GRAIN HANDLING EQUIPMENT

Kwik Kleen 572 grain cleaner, 5-tube, screenings auger, 5 hp., 1 phase, on transport, S/N583
Brandt 4000 grain vac, 9-1/2" hyd. fold auger, 1000 PTO, asst. tubes & pipes, S/N42843A
Drill fill, 16', 2 compartment, hyd. no plug augers, steel covers

AUGERS & CONVEYOR

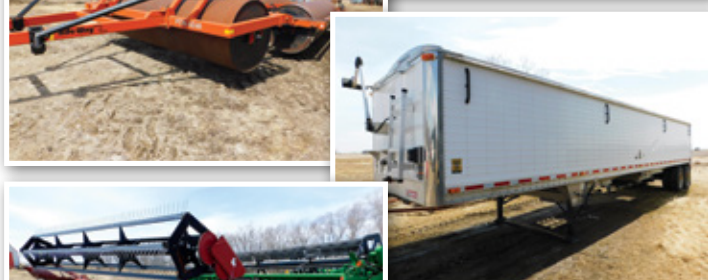
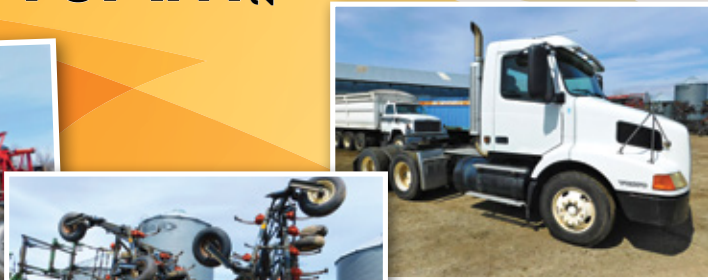
2004 Brandt 1070 low pro swing hopper auger, 70'x10", 12v auger jogger, hopper mover, 540 PTO, hyd. lift, S/N76026
Westfield MK100-51 swing hopper auger, 51'x10", hyd. hopper mover w/electric control, 540 PTO, hyd. lift, S/N74194
Westfield WR80-51 loadout auger, 51'x8", cable lift, electric motor mount less motor, on transport, S/N126754
Westfield W80-51 loadout auger, 51'x8", 540 PTO, on transport
Westfield W70-31 loadout auger, 31'x7", electric motor mount less motor, on transport, S/N50621
Top Air belt conveyor, 28', 12" clefted belt, 5 hp., 1 phase, electric motor, on transport, S/N19475

SCRAPER

Midland M44 hyd. dump scraper, 4 yd., dolly front, S/N12108

OTHER EQUIPMENT

Summers hyd. rotary rock picker, 3-bat reel, offset hitch, backstop
John Deere CX20 ditch bank mower, 20', double wing, tandems on main, air bag susp., 1000 PTO, stump jumpers, S/NWOCX20F002419
Woods batwing mower, 13', single wing, weight box, missing PTO shaft
John Deere 280 snowblower, 96", double auger, hyd. spout, 3 pt., less PTO shaft, S/N238GR
Pallet forks, 46" carriage, 48" forks, universal skid steer mounts
Farmhand hay buckler
300 gal. poly tank, hyd. pump, on skid



EUGENE & DELORES UNDEM | or Brad Olstad at Steffes Group,
DELORES, 701.490.6067 | 701.237.9173, or 701.238.0240

701.237.9173 | SteffesGroup.com

Steffes Group, Inc., 2000 Main Avenue East, West Fargo, ND 58078



TERMS: All items sold as is where is. Payment of cash or check must be made sale day before removal of items. Statements made auction day take precedence over all advertising. \$35 documentation fee applies to all titled vehicles. Titles will be mailed. Canadian buyers need a bank letter of credit to facilitate border transfer. **Scott Steffes ND81, Bob Steffes ND82, Brad Olstad ND319, Max Steffes ND999, Justin Ruth ND2019**